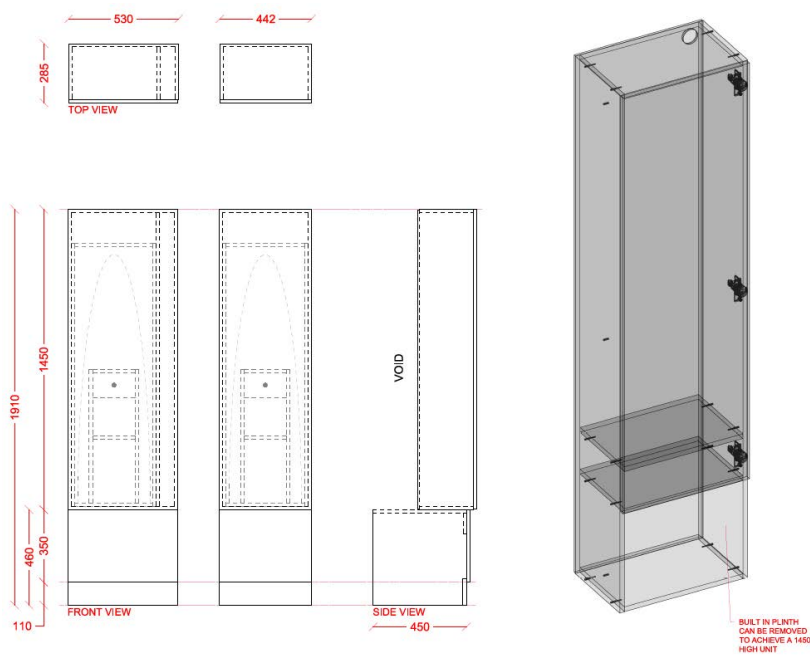




## INTERLOC LOCKER TYPE

# INTERLOC G STYLE - 1 DOOR IRONING BOARD UNIT

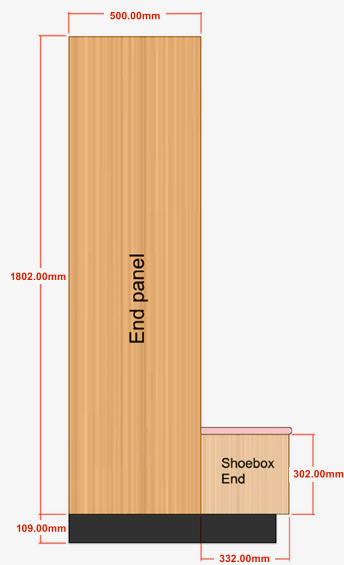
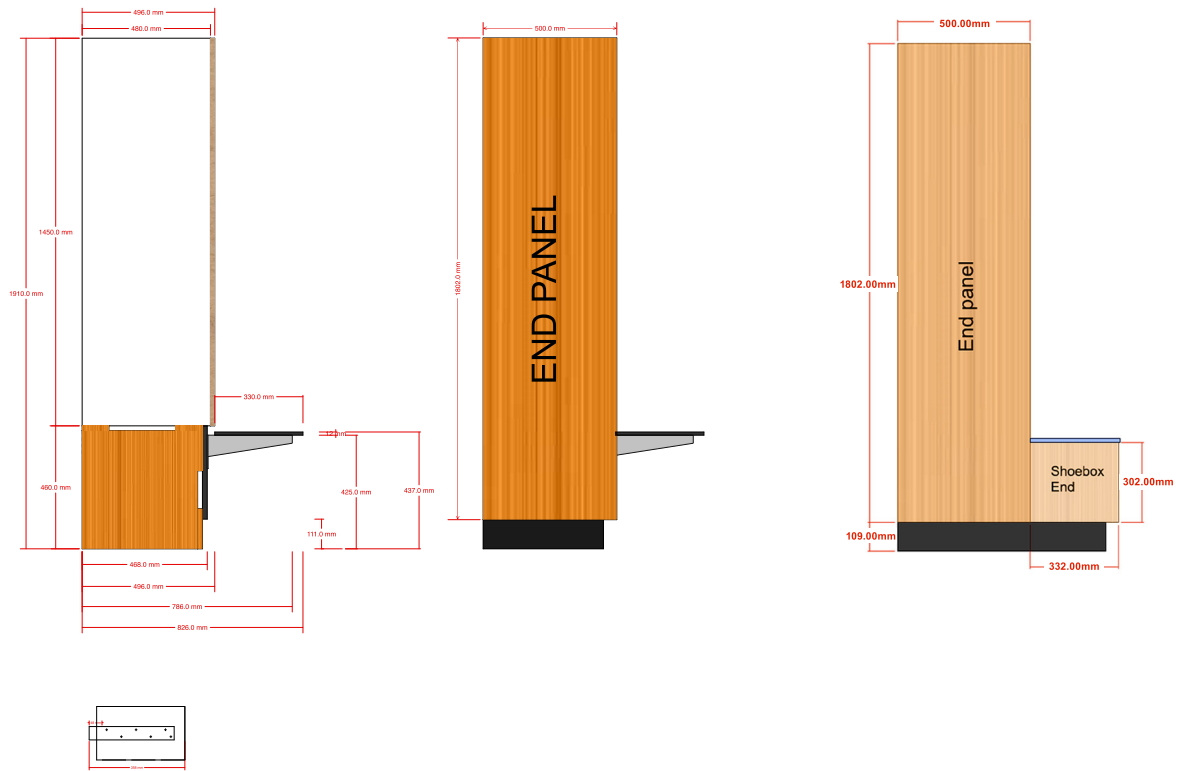
- ▶ G Style Ironing Unit 1450mm high x .442mm wide
- ▶ 1 x rectangular door plinth 450mm high black (Standard) to suit integrated seating.
- ▶ Coloured plinth available upon request
- ▶ Cavity behind to allow for lead to plugged into GPO
- ▶ Interloc advise GPO to be provided by others at a height of 1800mm off the FFL to allow access to GPO once unit is installed.
- ▶ Ironing board 950mm extended.
- ▶ Robin Hood ironing station includes board and cover
- ▶ Iron supplied
- ▶ Hardwired
- ▶ Timer
- ▶ White carcass
- ▶ Timber laminate
- ▶ Bulkheads available
- ▶ End Panels / Filler Panels to suit
- ▶ Interloc Numbering coloured labels or option for printed labels at extra cost
- ▶ Sloping Tops (optional)
- ▶ Coloured Internals (optional)



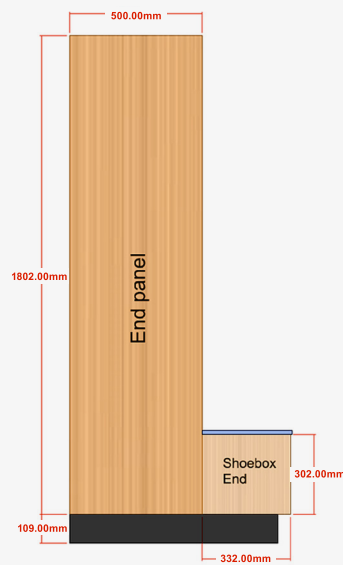
**REVIT Portal**  
[portal.interloc.com.au](http://portal.interloc.com.au)

**Locker Builder**  
(separate to Revit)

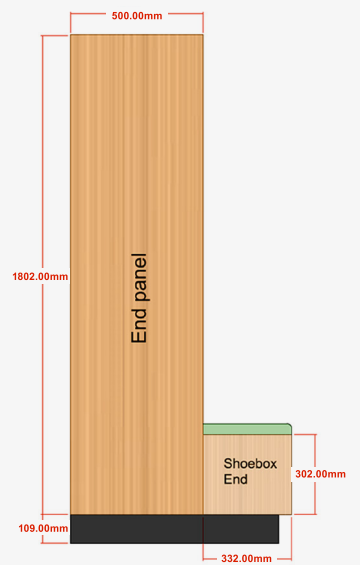
# SEATING



G Style seat with 25mm postformed  
high pressure laminate  
Open shoe storage shown



G Style seat with compact laminate seating  
Open shoe storage shown  
13mm Laminex Classic Oak (standard)  
Other colours available on request  
but may incur additional cost



G Style seat with 43mm padded upholstery  
Open shoe storage shown