

LoXS INSTALLATION MANUAL

Distribution or reproduction of this document as well as the use or publication of the content is not permitted without explicit permission from Interloc.

This manual is written with extreme care. Interloc does not accept any liability for damage resulting from incorrect or incomplete content in this manual.

The terms and conditions of sales valid at the moment of purchase apply to the systems discussed in this manual.

Table of Contents

Table of Contents	2
LoXS Introduction	3
System description	3
Prerequisites	4
Operating system installation	5
Microsoft Windows 2000/2003 Server installation.....	5
LoXS server Installation	19

Also, the following elements are optional:

- Coin mechanism for paid use of lockers.
- Serial card readers for barcode, magnetic strip card, Technogym or Mifare.
- LoXS server application to administer multiple terminals via a network.

The terminal, electronic locks and the pin sets are the system's only parts visible to the users.

System administration is possible through using the LoXS Server. Administrators can connect to the server using a recent web browser. The LoXS Server is connected to the LoXS terminal and the web based client using a LAN with TCP/IP/

This manual explains how to install the LoXS server.

Prerequisites for installation of the LoXS Server

To install the LoXS Server the following competencies are required:

- Basic networking knowledge.
- Understanding of IP-adressing and IP-subnetting.
- Basic Microsoft Windows Server 2000/2003 administration skills
- Basic Microsoft SQL Server 2000/2005 administration skills

Before installing the LoXS server, please make sure the following items are available, installed and ready to use:

- Server hardware:
The following requirements are applicable:
 - 1 GB memory
 - Intel Pentium IV 2.8 GHz
 - 500 MB free disk space for the application
- Server software
The following requirements are applicable:
 - Windows 2000 / 2003 Server with latest service pack installed
 - Microsoft SQL Server 2000 / 2005 with latest service pack installed
- An operational LAN based on TCP/IP
 - To connect the LoXS Server to the LoXS terminal

Operating system installation

Microsoft Windows 2000 Server installation

Basically, follow the setup manual for the Windows 2000. In the text below, relevant choices in the setup are addressed.

This installation assumes that you're installing Windows 2000 Server for the first time. The lines printed in boldface indicate a menu choice or a window title (caption bar) that you'll see during the installation.

To install Windows, follow these steps:

1. Insert the CD-ROM and turn on the machine.
2. When the system is started, the Windows 2000 Setup procedure will start and the **Welcome to setup** screen appears. Press Enter to set up Windows 2000.
3. When the License Agreement window appears, read this carefully and if you agree, select **I accept this agreement**.
4. Windows 2000 Server Setup:

The list below shows existing partitions and spaces available for creating new partitions.

To setup Windows 2000 on the selected item, press ENTER.
To create a partition in the unpartitioned space, press C.
To delete the highlighted partition, press D.

Press ENTER to use the complete disk as a Windows 2000 disk.

Because we want to use the security of Windows 2000, you need to format the partition using NTFS. The system will now start formatting the partition.

5. After this is complete, remove the floppy diskette or cd (if there is one present), and the computer will restart in 15 seconds. When needed, the system will convert FAT into NTFS and will reboot again.
6. When the system restarts, it will install the necessary devices, such as the keyboard and mouse. This will take several minutes.
7. Now the system will prompt you to fill in the following information:
 - Regional settings, such as data/time presentation, keyboard layout. Modify, if necessary.
 - Fill in the user name and the company.
 - Product Key. Type the license key that is printed on the back of the CD-ROM housing.

- Licensing mode. Leave default.
- Per server. Number of concurrent connection = 5
- Computer name and administrator password. When the system is installed by Nedap, this password will be “grolle”, please make sure that you change this password after delivery.
- Windows 2000 components.
- Date and time settings.

8. Network Setup:

Consult your network manager regarding how to configure the network setup of this server. In this example, the server will be configured into a workgroup.

Choose **Typical settings** and then select **No, this computer is not** and fill in the workgroup name; for example: **Workgroup: XS**

During the installation, you may see some extra windows where you are prompted to fill in information about the type of display you are using, etc. Because these settings are straightforward, but dependent on the hardware you are using, these dialogs are not printed in this manual.

9. The Windows 2000 setup is now complete, remove your CD-ROM and click Finish to restart the computer. After this, you can log on as “Administrator”, using the password you entered in the section “Administration Account Setup”.
10. When logged in after the restart a window **Windows 2000 Configure your Server** appears. Consult the network manager regarding how to configure the network setup of this server. Otherwise do not select anything and close this window.

Note: Please install the most recent Service Pack of Windows 2000. Ensure that Windows 2000 is running correctly before installing the SQL-Server software.

Microsoft Windows 2003 Server installation

Basically, follow the setup manual for the Windows 2003. In brief the above description for Windows 2000 can be followed.

Database server installation

Installation of Microsoft SQL Server 2000

This chapter describes the installation of the SQL-Server 2000.

The installation of an SQL-Server will be explained using illustrations of the screens you will see during the installation. Before you can start installing the SQL-Server, you must have installed at least SP1 (Service Pack) on Windows2000 or Windows2003.

1. Insert your SQL-Server CD in the CD-ROM drive.
After a short time, the next window appears. Choose the marked selection.

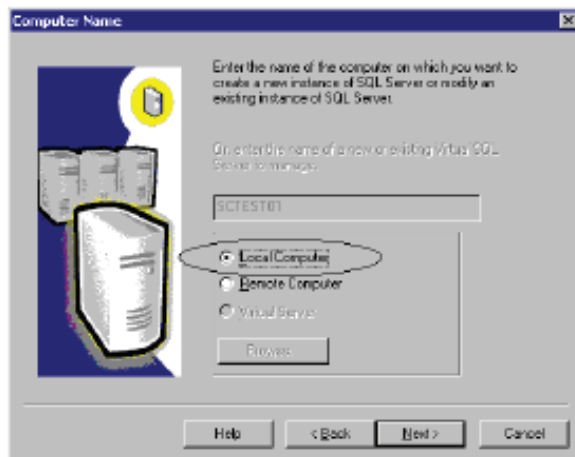


2. Install the database server.

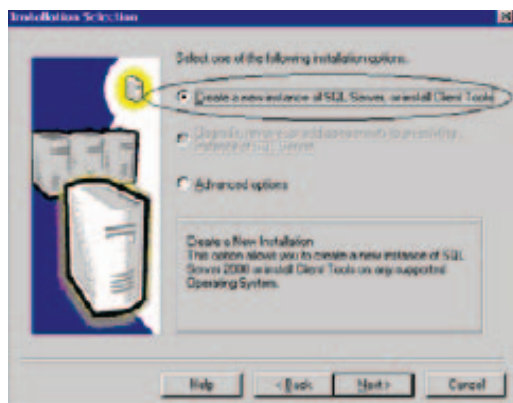


3. On the **Welcome** screen, click **Next**.

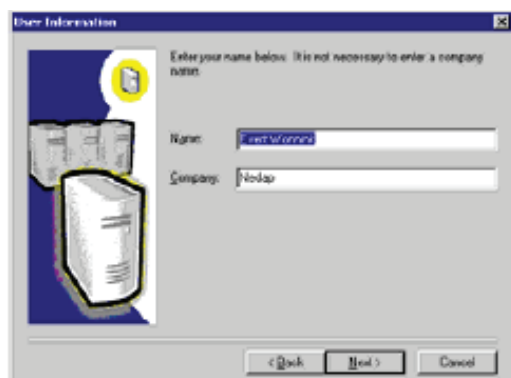
4. Choose **Local Installation** and click **Next**.



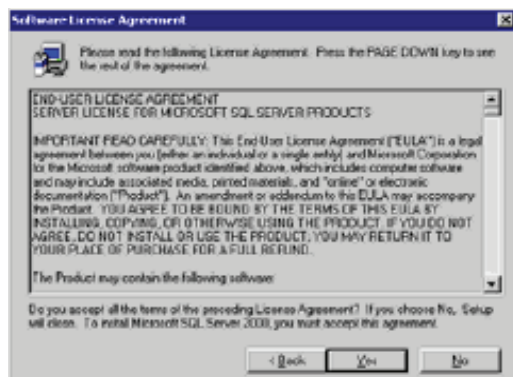
5. Create a new instance of an SQL-Server and click **Next**.



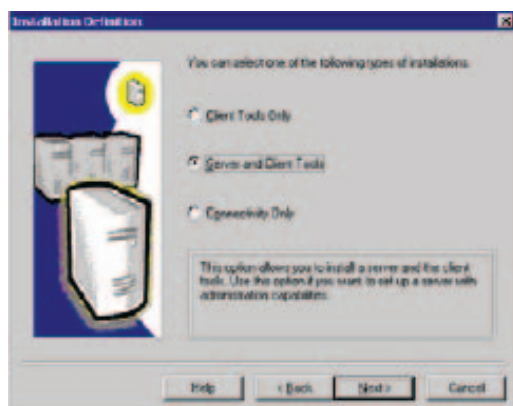
6. Fill in your name and company name. Click **Next**.



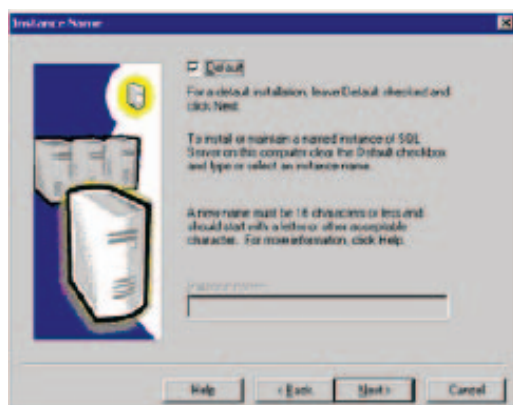
7. Read the license agreement and if you agree, click **Yes**.



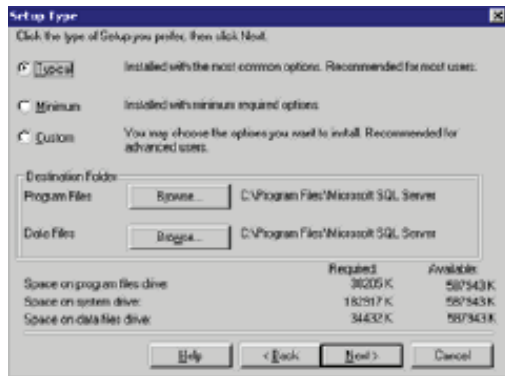
8. Installation Definition. Select **Server and Client Tools** and click **Next**.



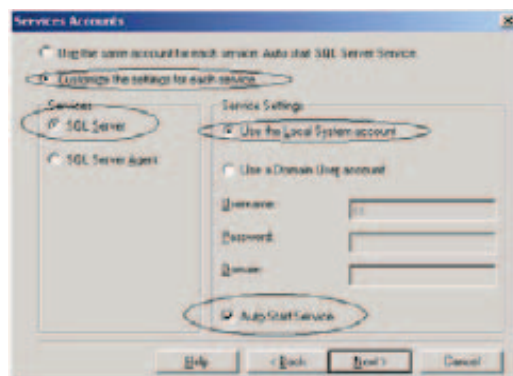
9. Instance Name. Leave the selection on **Default** and click **Next**.



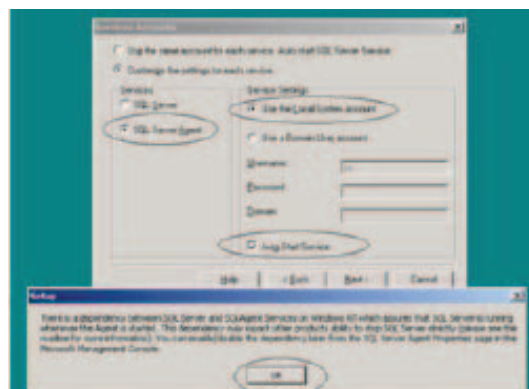
10. On the next dialog, select the **Typical** setup type. The SQL-Server specifies a drive and directory where it will install SQL-Server and the data files delivered with SQL-Server. Keep the default or select another drive or directory. Click **Next** to continue.



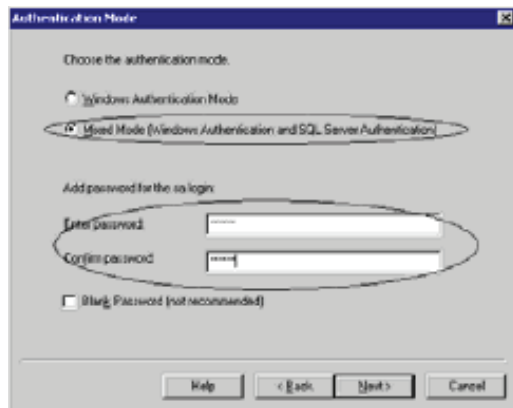
11. Activate **Customize the settings for each service**. Select from **Services** the **SQL-Server**. Then set the **Service Settings** on **Use the Local System account** and enable **Auto Start Service**. The dialog should look like the figure below.



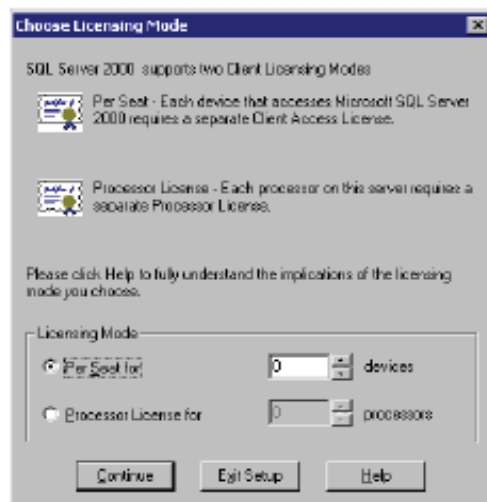
12. Select now from **Services** the **SQL-ServerAgent**. Then set the **Service Settings** on **Use the Local System account** and enable **Auto Start Service**. A windows pops up to warn you that there is a relation between SQL-Server and the Agent. See picture below. Just press the **Ok** button and click **Next** to continue.



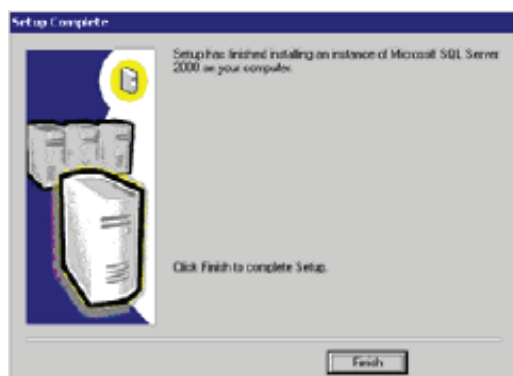
13. Select **Mixed Mode for the authorisation** and type in the password for sa. Click **Next** to continue. After you click Next, the installation starts.



14. In the dialog for the **Licensing Mode**, choose the **Per Seat for 5 devices** option and click **Continue**.



15. The SQL-Server will now be installed, wait for the setup to end. In the meantime, you can perform other (non-LoXS) tasks. Do not continue the installation of LoXS until the setup of the SQL-Server is finished. When the setup of the SQL-Server is finished, the following dialog appears:



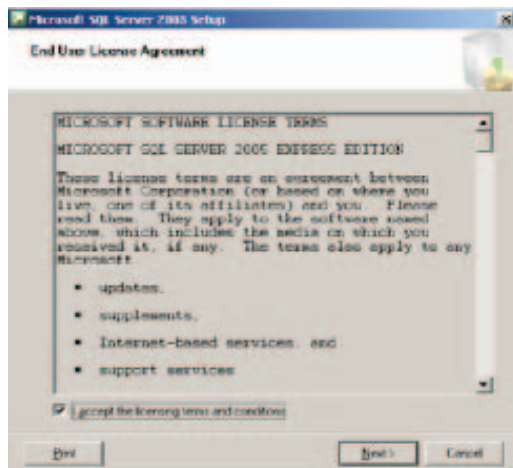
16. Click **Finish**. Ensure that Windows and SQL-Server are running correctly before continuing.

Note: If you receive an error at the startup of the server (for example, an error that a service could not be started), repair the error before continuing. Look in the eventlog for more details (use the application Event Viewer in the Administrative Tools group).

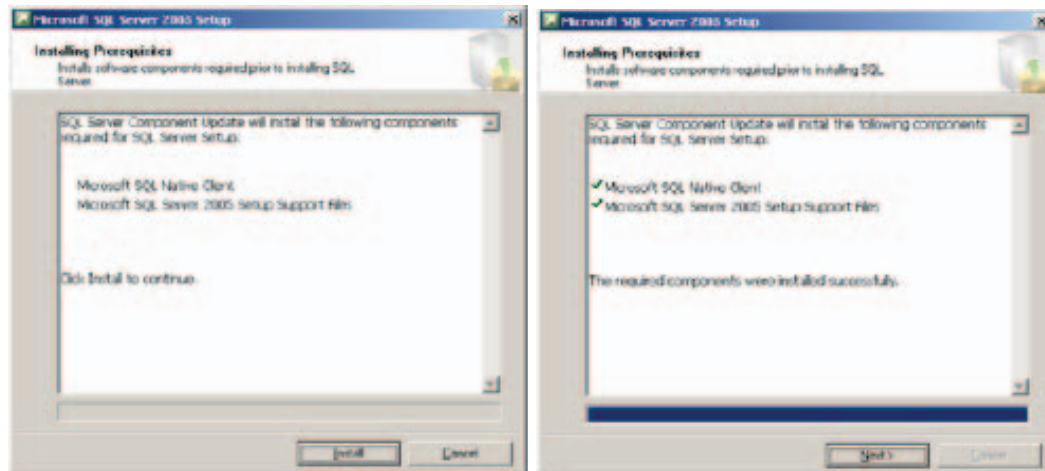
Microsoft SQL-Server 2005 installation

This paragraph describes the installation of the SQL-Server 2005. The installation of an SQL-Server will be explained using illustrations of the screens you will see during the installation. Before you can start installing the SQL-Server 2005, you must have installed at least:

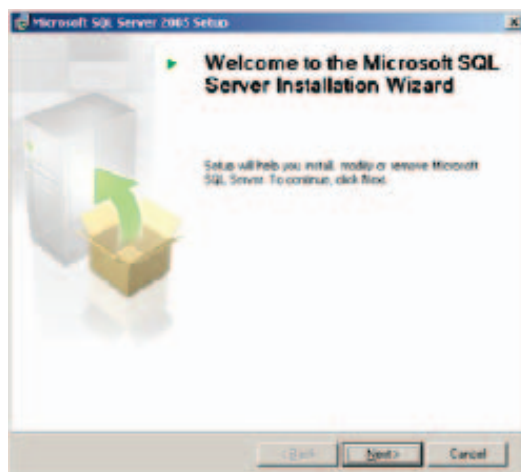
- Windows 2000 with Service Pack 4 or
 - Windows 2003 with Service Pack 1.
1. Insert your SQL-Server CD in the CD-ROM drive.
 2. Read the license agreement and if you agree, click ***"I accept the ..."*** and click **Next**.



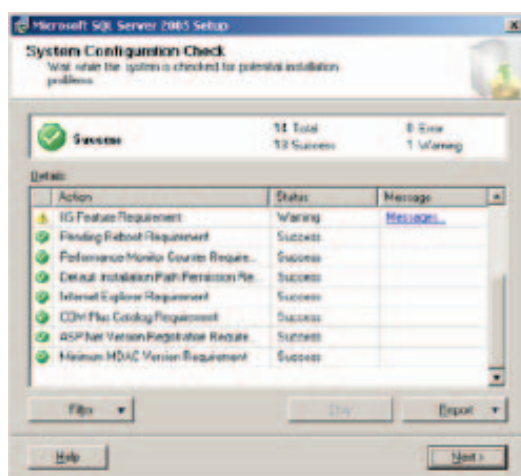
3. Setup will install Prerequisites, click **Install...** and click **Next**.



4. After a short time, the **Welcome** screen appears, click **Next**.



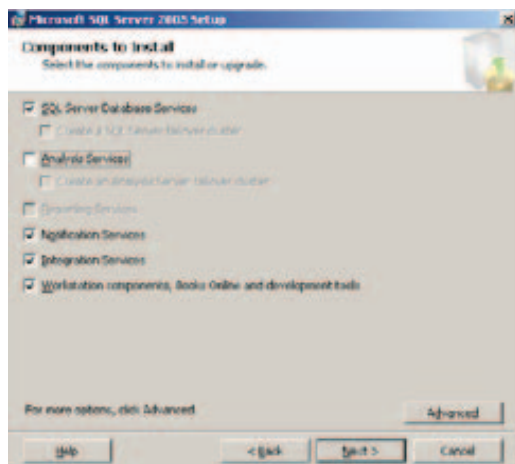
5. The **System Configuration Check** will be done, click **Next** when finished.



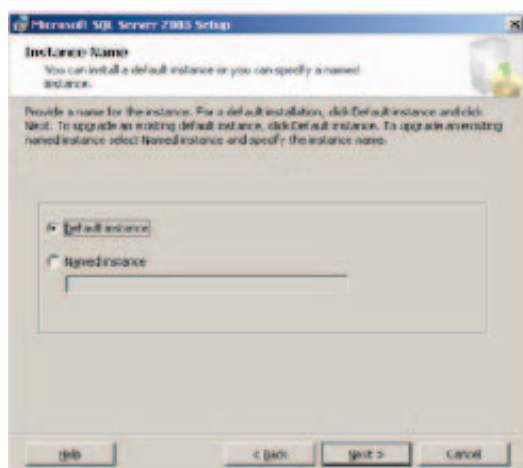
6. Fill in the Registration Information and click **Next**.



7. Select the components to install and click **Next**.



8. Instance Name.
Select the default instance and click **Next**.

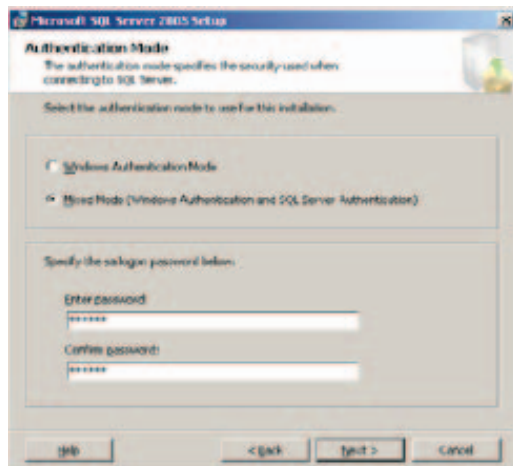


9. Service Account.

Set to “**Use build-in System account**” with “**Local system**” as the account. Click **Next**.



10. Authentication Mode. Select **Mixed Mode** for the authorization and type in the password for sa. Click **Next** to continue.



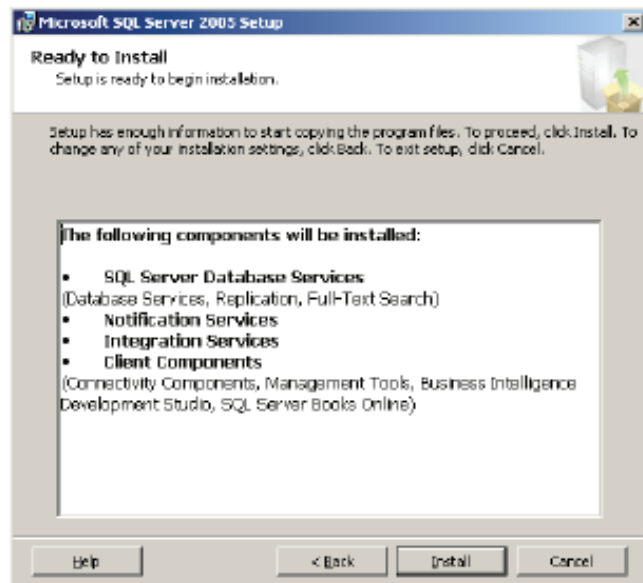
BEWARE: SQL 2005 requires strong passwords, this means at least 6 characters in length and

satisfy at least three of the following four criteria:

- a. It must contain uppercase letters.
- b. It must contain lowercase letters.
- c. It must contain numbers.
- d. It must contain non-alphanumeric characters; for example, #, %, or ^.

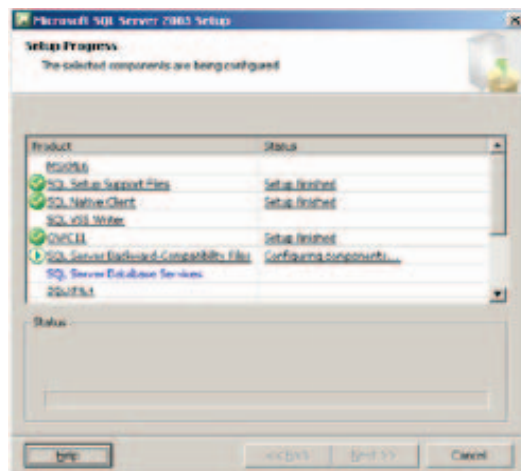
The 'sa' password by default used is: *Grolle@nedap1*

13. After you click **Install**, the installation starts.



14. Setup Progress screen.

When setup is finished you will be able to press the **Next** button



15. Click **Finish**. Ensure that Windows and SQL-Server are running correctly before continuing.



Note: If you receive an error at the startup of the server (for example, an error that a service could not be started), repair the error before continuing. Look in the eventlog for more details (use the application Event Viewer in the Administrative Tools group).

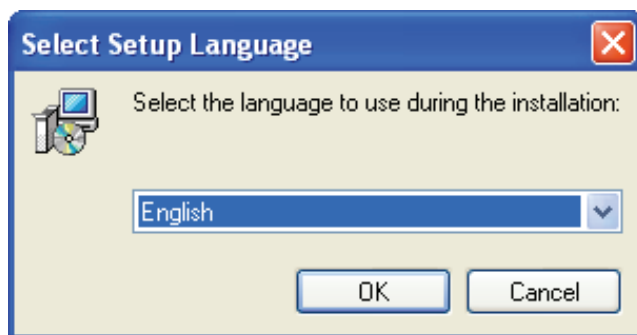
Make sure to install the most recent Service Pack of SQL-Server. Ensure that Windows and SQL-Server are running correctly before installing the LoXS Server software.

LoXS server Installation

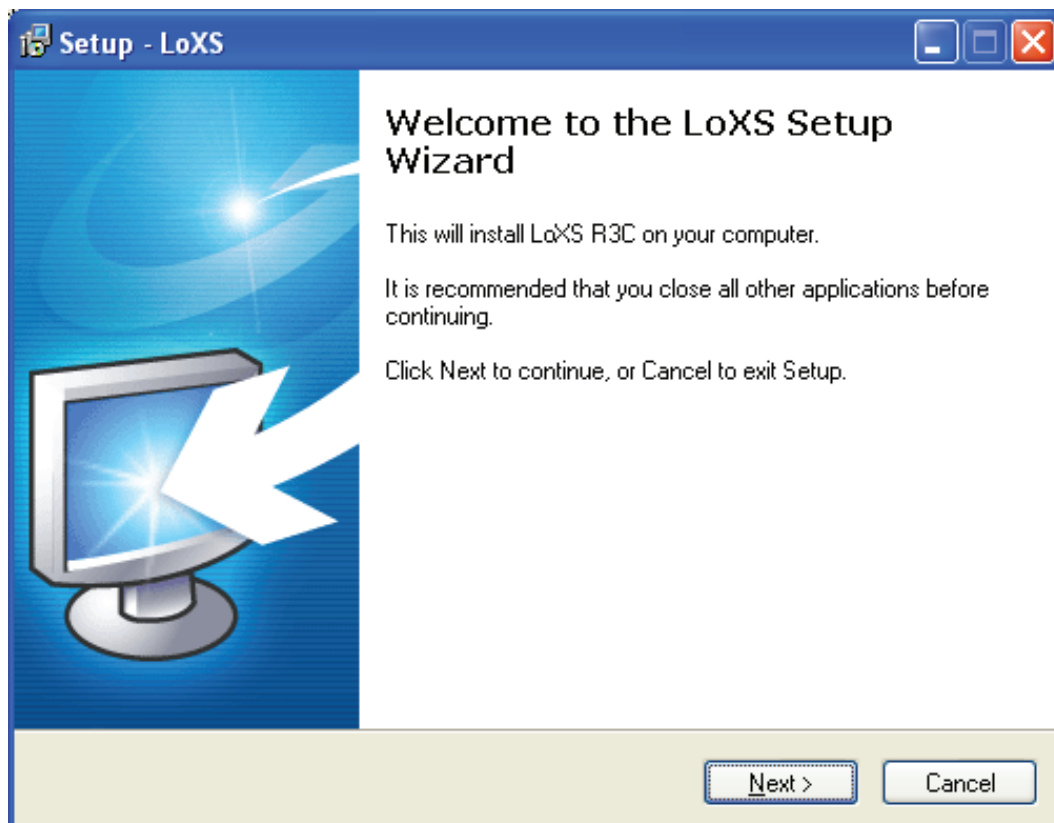
Installation of the LoXS Server

This chapter explains the procedure for installing LoXS on your server.

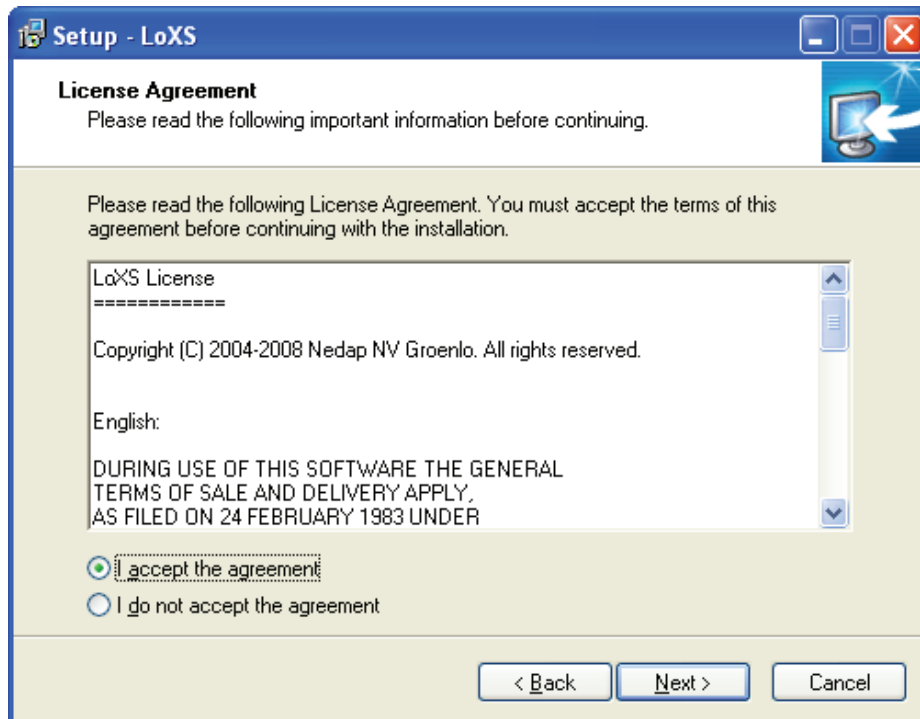
1. Start the installation by double clicking on '*Setup LoXS r3c.exe*' or the setup program that was supplied to you by Interloc.
The installation program will ask you to select a language.



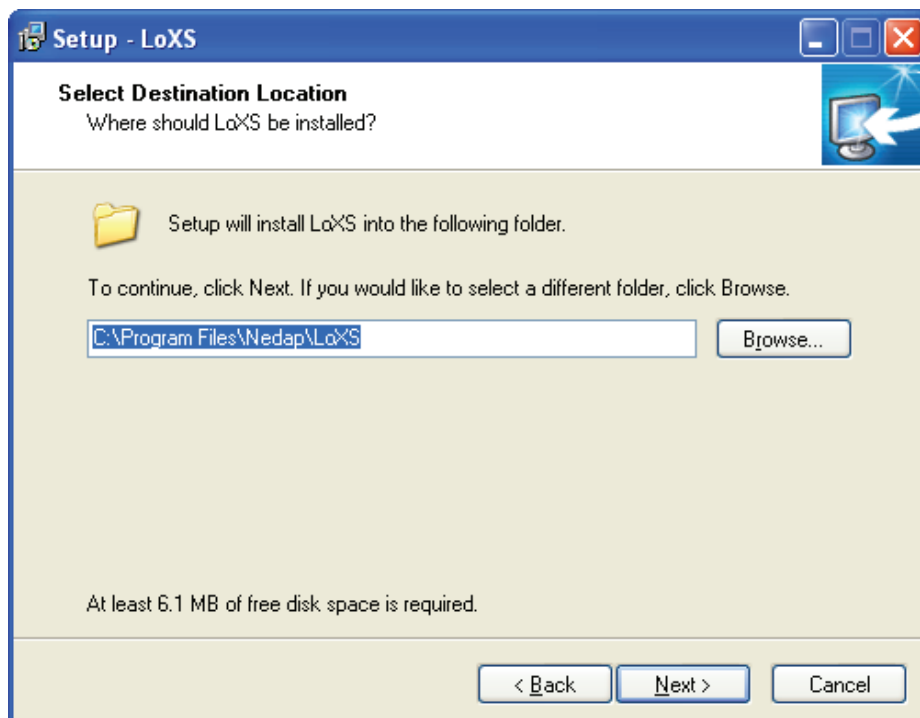
2. Select the language of your choice and click the **OK** button. The LoXS setup program welcomes you to the **LoXS Setup Wizard**.



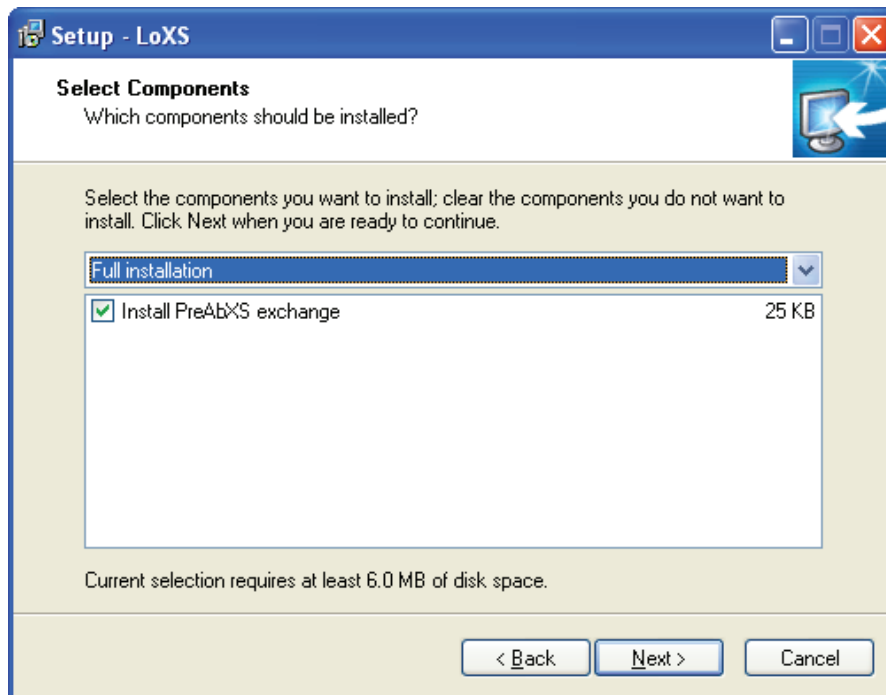
3. Please read the **License Agreement** and if you agree to the terms and conditions select the corresponding radio button. Then click the **Next** button.



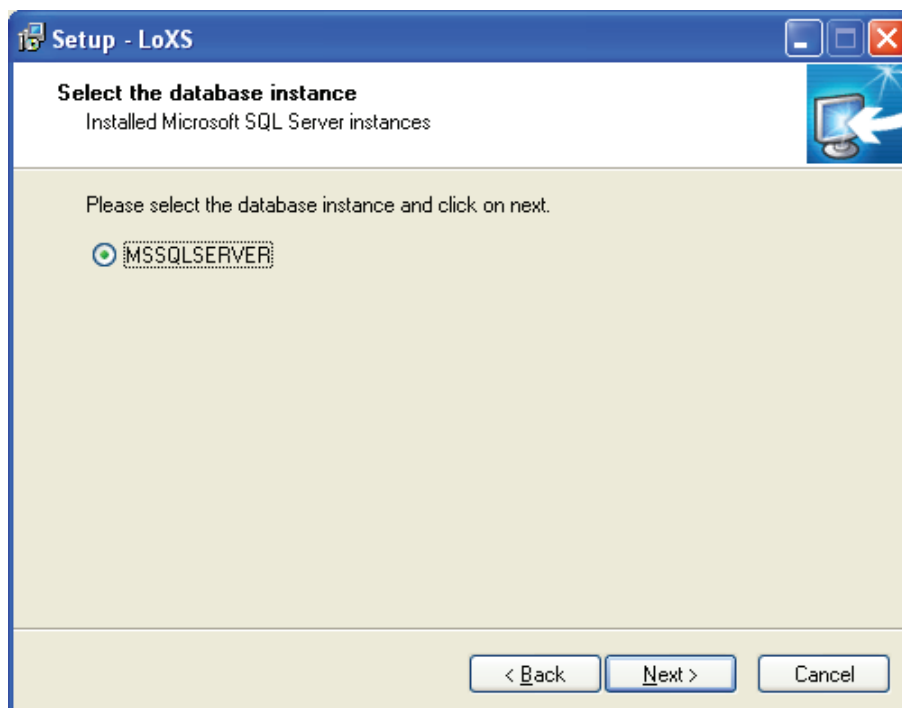
4. Specify the **Destination Location** and click the **Next** button.



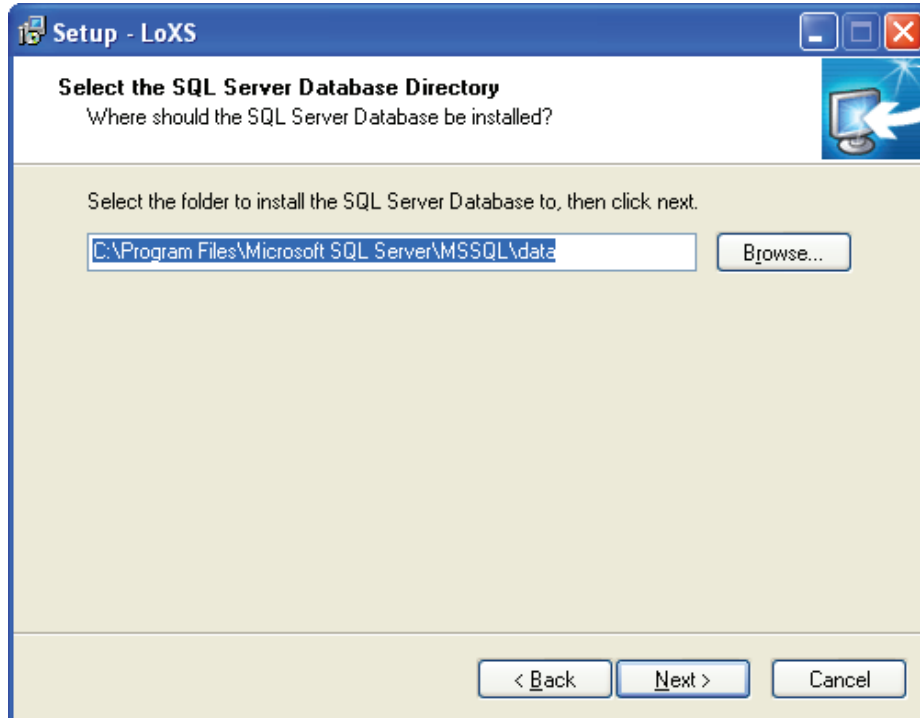
5. Select the components you wish to install. Select **Full Installation**, make sure that the option **Install PreAbXS exchange** is checked if you require a connection to the PreAbXS system.
Then click the **Next** button.



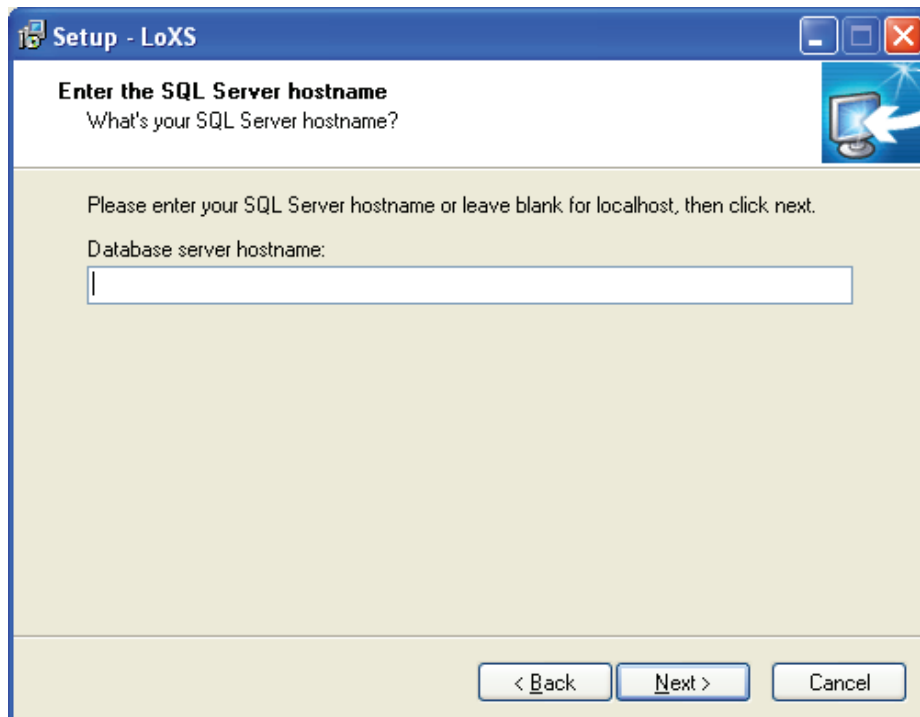
6. Select the right database instance and click **Next**.



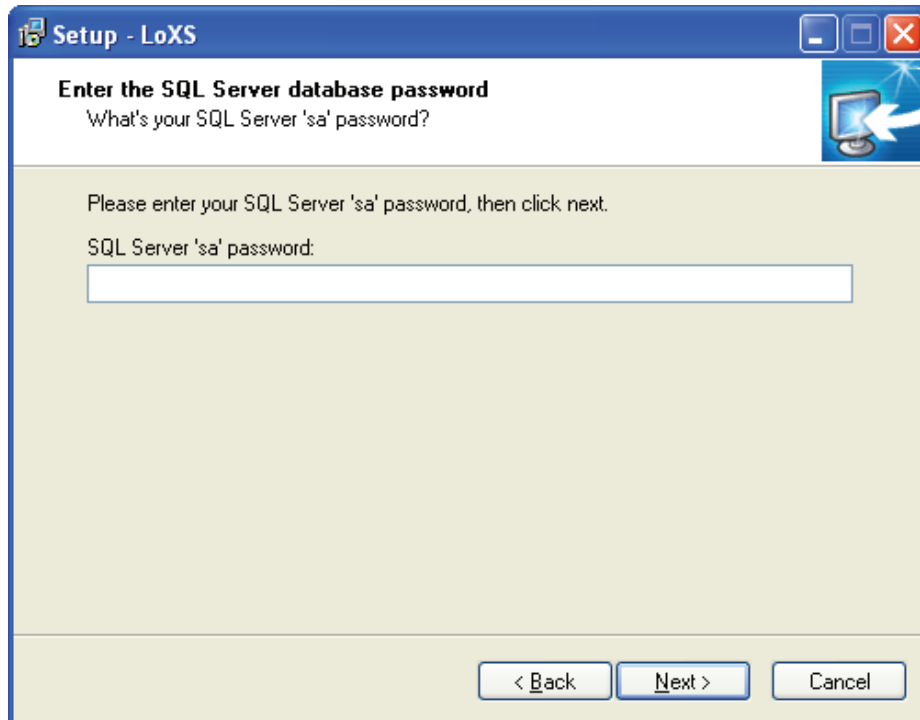
- Specify the location for installing the SQL Server database for your LoXS-server.
Click **Next** after that.



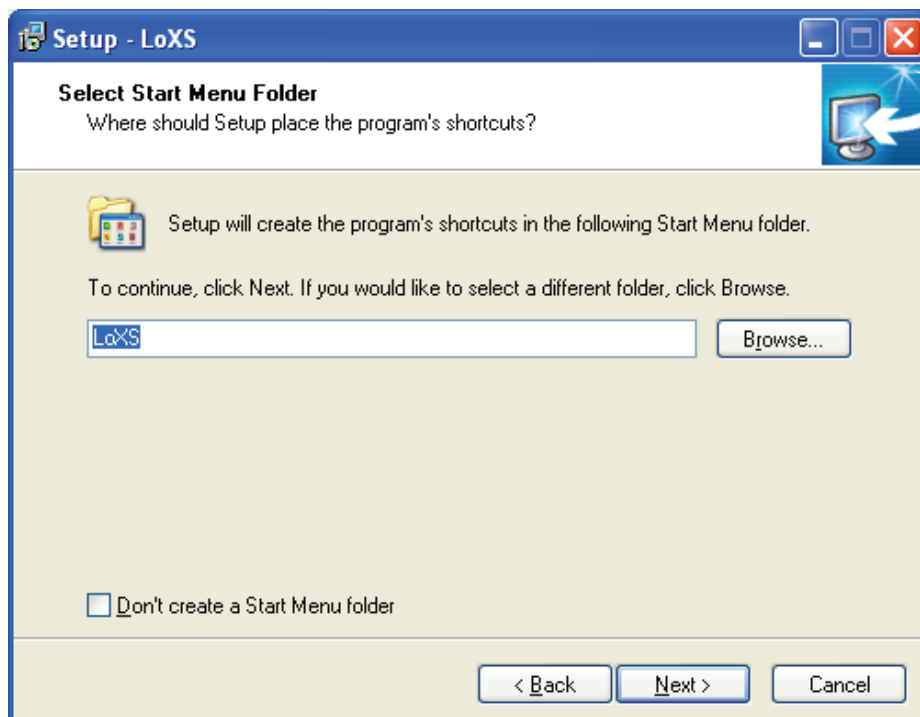
- Specify the host name of the computer that you install the SQL Database on. If you leave the **Database server hostname** field blank, the installation program will specify the local computer for you.



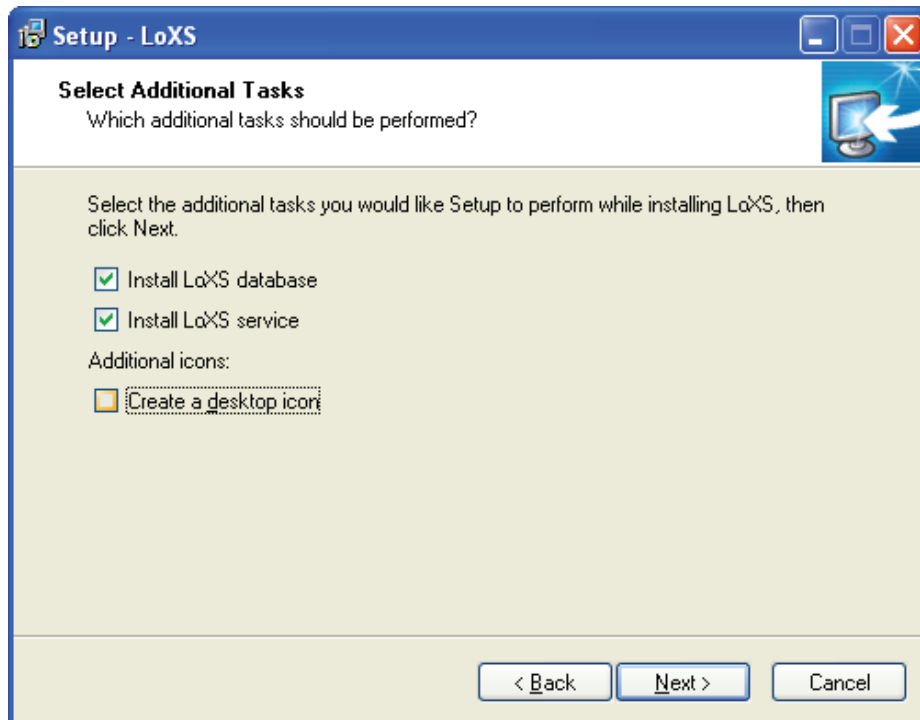
9. Enter the password for the 'SA' account. Make sure to enter the same password that you specified when installing Microsoft SQL Server. Then click **Next**.



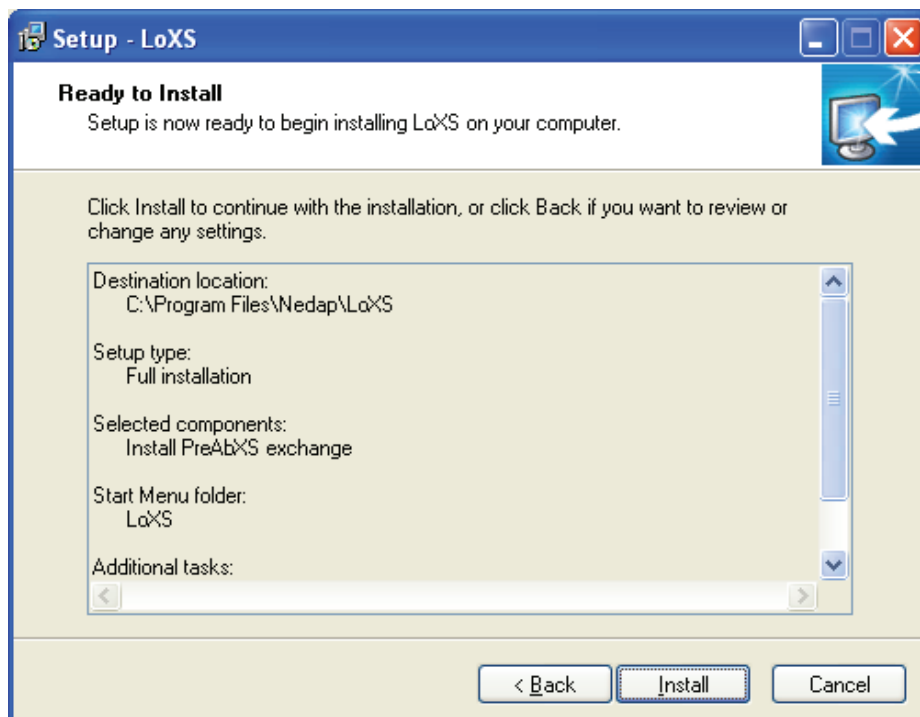
10. In the next window you can enter the name of the folder in the Windows Start Menu that will be used for the LoXS shortcuts.



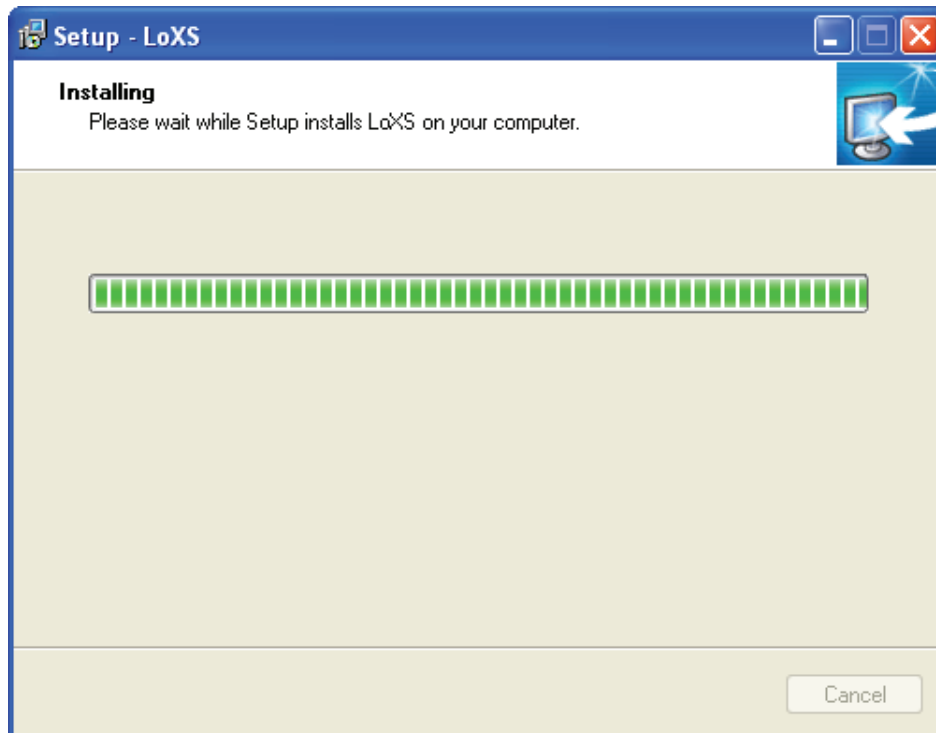
11. Select what tasks you want to LoXS Setup program to perform. Usually at least the options **Install LoXS database** and **Install LoXS service** will be checked. Click **Next** to continue.



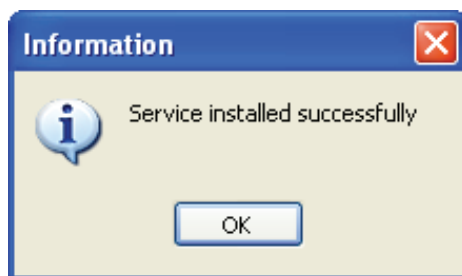
12. The setup program lists the settings that you provided for installation. You can review these settings and change them by taking steps back in the installation process. If all settings are correct, please click **Install** to install the LoXS server.



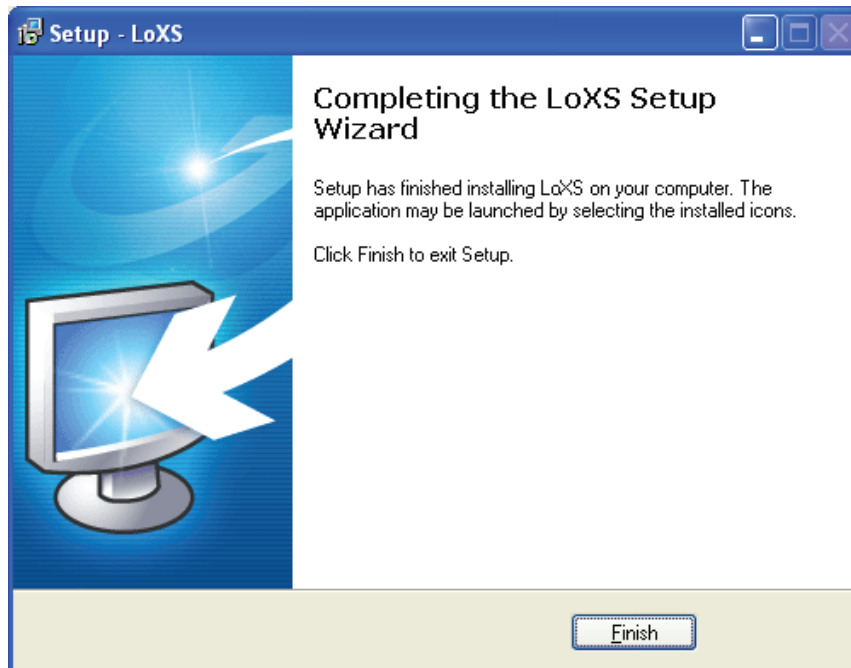
13. The LoXS server will now be installed. The progress bar shows the progress of the installation.



14. The setup program will tell you when the LoXS service was installed successfully. Click the **OK** button to finish the installation.



15. The final screen of the LoXS Setup Wizard is shown. Click **Finish** to end the LoXS setup program.

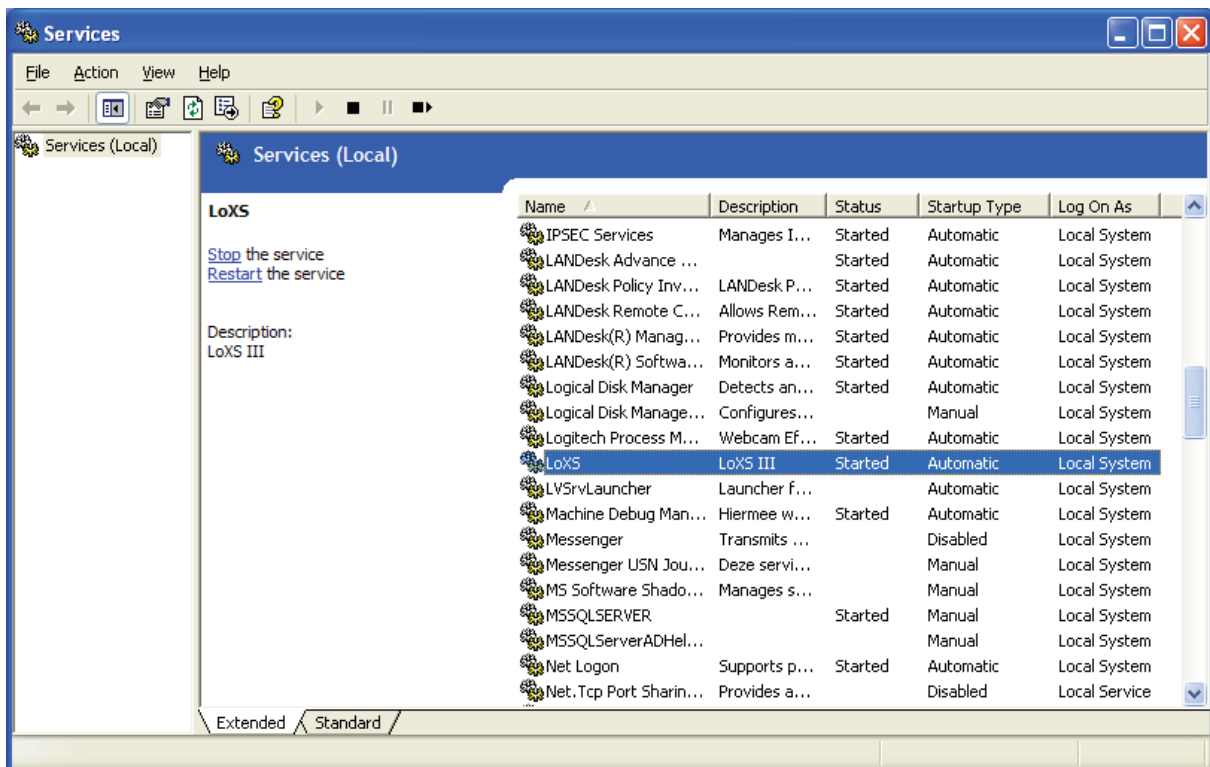


The LoXS server is now installed on your server computer. The installation consists of a service and a database.

Checking the installation and starting LoXS

To verify the installation you can check the services that are running on your computer. The **Services** window will appear by using the run-command "*services.msc*".

This window will show the LoXS service and all other services running on the computer. In this window you can also specify if you want the service to be started automatically or manually.



The LoXS service can also be started by using the shortcut **LoXS** in the **LoXS** folder in the Windows **Start Menu**.



Please understand that this shortcut will only start the service, it will not show the LoXS administration program.

The LoXS server is a web based system. You will use a browser to approach the LoXS server and administer your LoXS system.

To use the system, please start a recent version of a common web browser, like Microsoft Internet Explorer.

In the address bar please type the link to your server:

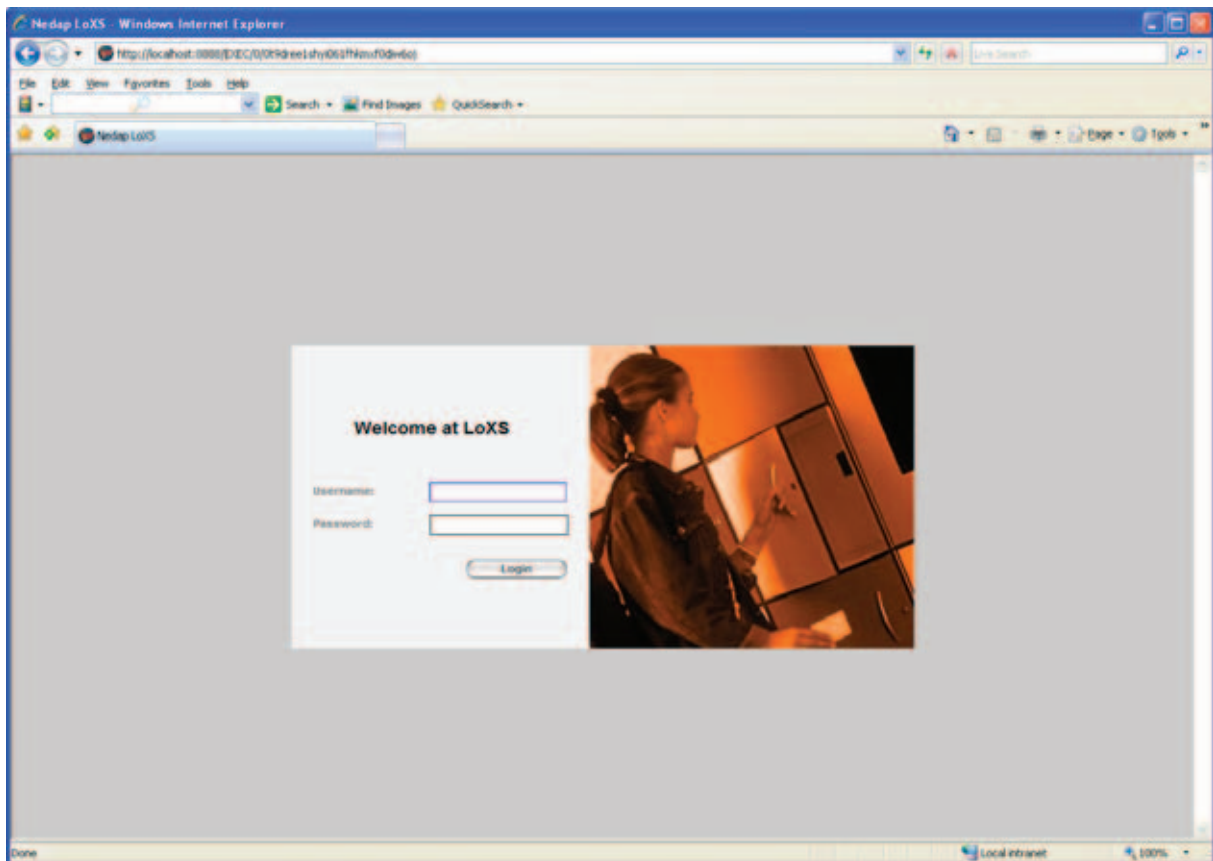
http://hostname:8888

Hostname should be replaced with then name or the IP-adress of your server. To refer to the local computer you can use:

- 127.0.0.1
- localhost

The TCP-port number is 8888. Do not forget to specify this port number in your address.

The browser will show the LoXS welcome page:

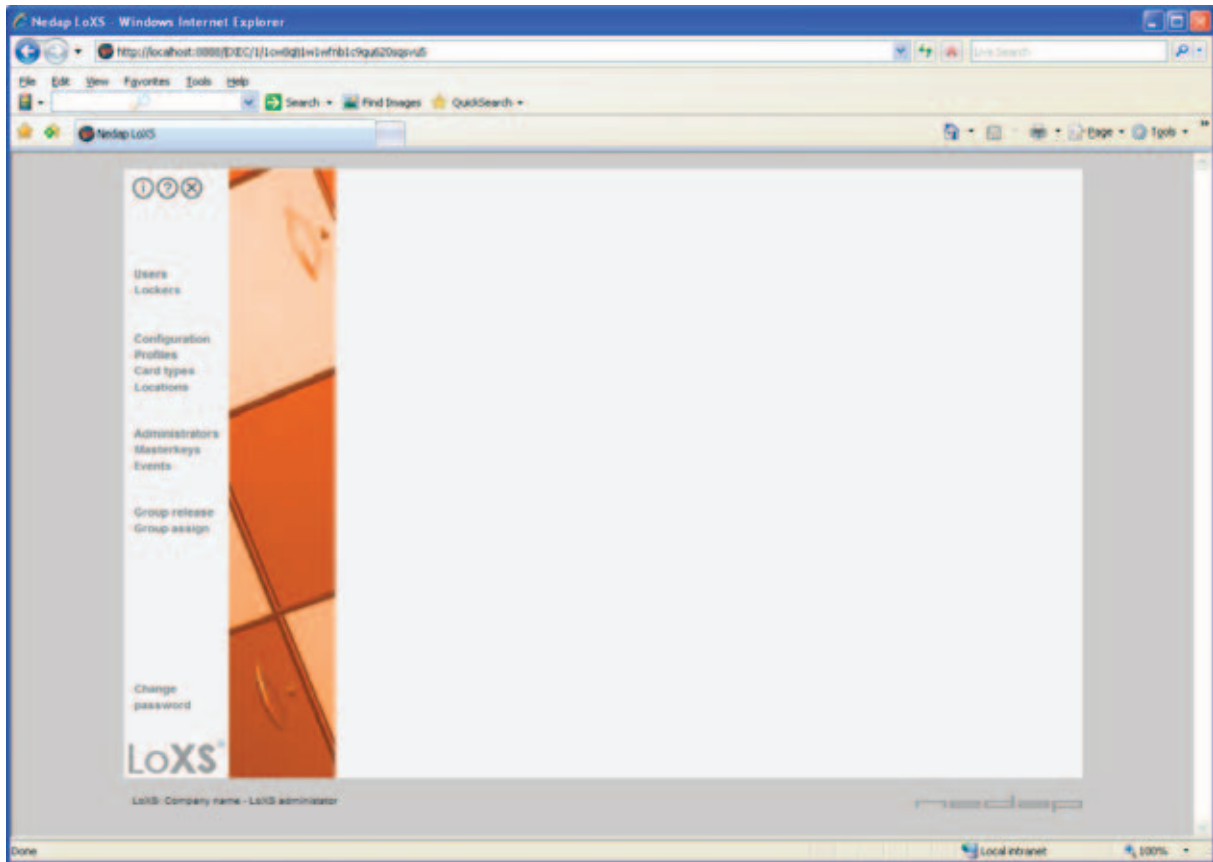


To log on to your LoXS server the first time, please use the default name and password for the administrator:

- Username: loxsadmin
- Password: qm826r

We recommend to change the password during the first logon.

The LoXS Server administration window will appear. It will look like this:



For an explanation about the use of the LoXS Server please see the user manual.